

KEEP UP!



Red Roof Centre
01977 610931
Website: www.redroofcentre.com
Facebook: Red Roof Kinsley



Havercroft and Ryhill Community Learning Project
01226 727824
Facebook: Havercroft and Ryhill Community Learning Centre

EY UP! & Welcome

Welcome to the launch of our first ever joint newsletter covering the 4 villages of Kinsley, Fitzwilliam, Havercroft and Ryhill! The 2 largest Voluntary Community Centres in the South East of Wakefield, Havercroft & Ryhill Community Learning Project and Red Roof Centre (covering Kinsley & Fitzwilliam) are working together to produce a community initiative until March 2027.

The aim is to attempt to reduce health inequalities and increase community wellbeing so that we can reduce the likelihood of peoples needs and concerns escalating. Our brief is very broad and covers all aspects to Building Healthy and Sustainable communities (the name of the project), however, the project has some clinical areas of focus.

The 5 clinical areas of focus are:

- **Mental Health Issues**
- **Maternity**
- **COPD**
- **Early Cancer Diagnosis**
- **Hypertension**

We are working with local schools, partners, community groups, businesses and local authorities so we can provide relevant up to date information for the residents of our villages which will be promoted within this newsletter.

If you have any concerns regarding any aspects of health that you feel are missing or you would like us to include or you want more information on becoming a volunteer please contact as below.

Kinsley & Fitzwilliam – Rachael
rlucas@kinsley-fitzwilliam.org.uk
01977 610931

Havercroft & Ryhill – Katherine
katherine@rycroftcommunity.co.uk
01226 727824

Both centres are a Help at The Hub, a Community Anchor and a Safe Space area meaning residents can feel confident to attend either centre and we will endeavour to assist with any type of query and if we can't help directly, we can access support from one of our many partners.

Did you know that both centres also offer a range of volunteer opportunities?

Please contact the respective centres for further information and find out how we've linked up with Wakefield Councils Citizens Coin to advertise and reward volunteers.



RED ROOF CENTRE CIC

We are proud to be delivering the Building Healthy & Sustainable Project for our residents alongside Havercroft and Ryhill Community Learning Project. We believe our residents should receive the same level of support and services as anyone else. Our aims for this project are to address health inequalities and improve access to health services and inform our residents of what is available to them.

Red Roof Centre CIC was incorporated on 10th August 2022 as a Community Interest Company (CIC). The centre was formerly The Kinsley & Fitzwilliam Learning & Community Centre.

The majority of our staff have worked in our community for over 10 years (some nearly 20!) so we know our community well and are aware of their needs. We strive to provide a personable service in a safe, secure and friendly environment.



The centre boasts a fully resourced I.T suite, complete with a wide range of assistive technology, 4 managed workspace units, a full day care nursery, community café, classrooms, sports and community hall and also provides full conference and meeting facilities at competitive rates. There are excellent road and rail links, secure car parking and it is easily accessible from all surrounding areas.



HAVERCROFT AND RYHILL COMMUNITY LEARNING PROJECT

Havercroft and Ryhill Community Learning Project (Charity Number 1151384) is a community organisation situated in the centre of Havercroft and Ryhill. Established as Havercroft Skills Project in 1990, the name was changed in 2008 to Havercroft and Ryhill Community Learning Project to reflect the community work of the organisation and subsequently became a registered charity in 2013. HRCLP offer a range of facilities and services to local residents and is a valued community asset. It provides many facilities, activities and services to the local communities. The demand for all of the facilities, activities and services is growing. More people are using the provision, particularly our social prescribing service and mental health support.

We deliver a range of events throughout the year and are supported by a fantastic team of volunteers.

We are proud to be delivering the Building Healthy and Sustainable Communities Project for our residents alongside Red Roof Centre. We believe that our local residents have the right to the same access to facilities and services, particularly health services, as anywhere else, regardless of where you live and your personal circumstances.



RED ROOF CENTRE CIC

WEEKLY ACTIVITIES AND GROUPS



Wakefield Road, Kinsley, Wf9 5BP
Tel: 01977 610931

MONDAY

CAFE 10-2PM

Step Up - Career Advice 9-4pm
(2nd Monday of the month)
Citizens Advice - 10-12pm
Keep Fit Aerobics - 10-11am
Leeds Credit Union - 9.30-3.00pm

Tuesday

CAFE 10-2PM

Stay, Play & Weigh
9.30 - 11.15am

Karate
7-9pm

Wednesday

CAFE 10-2PM

Yoga - 11.30 - 12.30pm
Kine Dancing - 7.15-9.15pm

Thursday

CAFE 10-2PM

Blood Pressure Checks - 12-3pm
Swap2stop 12-3pm

Friday

CAFE 10-2PM

Buggy Walk - 10-11am
Returning in May

SCHOOLS



Ryhill Junior, Infant & Nursery School

Ryhill Junior, Infant and Nursery School is a welcoming, friendly and supportive school, which places the learners at the heart of everything we do. We aim to provide a high quality education within a caring environment which will help our children to succeed and grow.

Through our engaging curriculum, we ensure that children can foster a passion for learning and curiosity that will help to develop high aspirations and a lifetime of memories. We believe in ensuring that children receive a well-rounded curriculum; where individual talents can be spotted and nurtured to ensure that all children experience success and reach their full potential. The school has a dedicated team that works hard to reach high

standards in everything we do and this is further embedded through our successful relationships with parents, the local community and the other schools including those in the local area. We firmly believe that education is a partnership between home and school and regard you as an active partner in your child's education and value your interest and support. 'Together we can achieve!'
Headteacher Emma Jones



Fitzwilliam Primary School

At Fitzwilliam Primary we offer a nurturing, safe environment which allows our children to thrive both academically and socially. We ensure the children have multiple experiences which support them to become a respected local citizen. We are a one-form entry school which is situated at the bottom of Second Avenue. We are hoping to begin a PTFA (Parent, Teacher and Friends Association) which is a team of people who support both school and the local community with events and experiences. They meet around 3 times per year and support with

events. If you would like to join this team, please register your details using the QR code below.
Lynsey Whalley - Head Teacher



Kings Meadow Academy

At King's Meadow Academy, we are proud to serve a thriving and supportive community here in the heart of Kinsley. Our vision is deliberately short and simple and at the heart of it is community cohesion. We want to be a beacon in our community offering support for those who need it. This is because we know that our children do best in life when school works hand in hand with families, providing support wherever we can. We know times are tough at the moment with the cost of living crisis and so we always try

to think of the little bits of help we can offer - from the food parcels to the toiletries, from our walking bus to our wellbeing quad, whatever we can do to help our families and children thrive, we will.

Dan Gough
Head Teacher



King's Meadow
Academy

Crofton Academy

At Crofton Academy, we take great pride in being at the heart of our local community, providing high-quality secondary education to children and young people. As a school dedicated to nurturing future generations, we believe in fostering not only academic success but also healthy, sustainable lifestyles that benefit both individuals and the wider community.

We are proud to support the Building Healthy & Sustainable Communities Project.
Newstead Green Primary School



Outwood Primary Academy Newstead Green

I am Lindsey Corbett and I am proud to be the Principal of Outwood Primary Academy Newstead Green, which is part of the Outwood Grange family of schools. At Newstead Green we pride ourselves on delivering a high quality education, high standards and providing a highly inclusive learning environment for all our children. Our community is at the heart of everything we do and we are always striving for ways to improve and support our community.

With this in mind we are excited to be working in collaboration with other local schools to build healthy and sustainable communities in partnership with Havercroft and Ryhill Community Centre and Red Roof Centre in Kinsley. Watch this space!



The Red Roof Children's Day Nursery

The Red Roof Children's Day Nursery is responsive to the needs of our local community and works to raise aspirations for all children and families who access our provision.

We aim to provide children with a safe, caring and stimulating environment where they can learn, develop and be supported to reach their full potential.

We work in partnership with parents/carers; giving children consistency, structure and placing an emphasis on learning and development.

Why choose Red Roof?

Our Red Roof Children's Day Nursery opened in 2005 as a small crèche and has now grown into a well-established nursery within the Kinsley & Fitzwilliam area offering the following to our community

- Registered capacity of 44
- Provide both funded and private day care for children aged 2, 3 & 4.
- Flexible options for sessions available
- Open Monday to Friday 8am-6pm 51 weeks of the year
- Good parking facilities for easy drop off and pick ups
- Well established with a good reputation
- Promote healthy eating as part of our snack and meal options
- Creative activities planned daily
- Work with external companies to introduce new life skills and exciting opportunities
- Highly experienced staff
- Good public transport links to & from surrounding areas
- Friendly and welcoming atmosphere
- Good relationships with nearby schools/academies/nurseries

If you would like more information on The Red Roof Children's Day Nursery or to express an interest in your child attending, please visit our website on www.redroofcentre.com/projects-8.



Kinsley Boys Football Club

Kinsley Village FC was founded in 1962 and is now a well-established football club run by volunteers, with several teams now playing under Kinsley Boys Football Club. The clubhouse and pitch side have all undergone work to improve the facilities and we welcome old and new faces when we host our home games most weekends. You will find us off of Tombridge Crescent Kinsley, WF9 5HA.

We are also pleased to be part of the Building Healthy and Sustainable Communities Project with Red Roof Centre and Havercroft and Ryhill Community Learning Centre.

Ian Horobin and Tracy Lucas – Directors at KBFC



Titanium All Stars

Titanium All Stars were established in September 2024. We have over 50 members and compete in Baton, Pom, Military Flag and combination. Come and join us. Welcoming all boys and girls from 2 years to open age. Contact Gemma on 07769 273607 or Sophie on 07754 040753 for more information. You can also find us on our Facebook page - Titanium All Stars Majorettes.



E360

Welcome to E360, your premier fitness facility in Fitzwilliam, dedicated to fat loss and performance for individuals of all levels. With over 15 years of experience, we pride ourselves on transforming lives and fostering a vibrant community focused on health and fitness.

Our expert trainers work with all ages and abilities, ensuring tailored programs that meet the unique needs of every member. Whether you're just starting your fitness journey or looking to enhance your performance, our supportive environment encourages you to reach your goals.



Conveniently located behind the train station on Wentworth Terrace, E360 is your go-to destination for achieving a healthier lifestyle.

We invite you to connect with us through Messenger, Facebook or Instagram to learn more about our programs and community events. For direct inquiries, feel free to contact Craig on 07834223684 or via email at craig@exercise360.co.uk

Join us at E360 and take the first step towards a fitter, healthier you!

Craig Houghton – Founder





Rycroft Hammers men's open age A.R.L.F.C

Training days are on a Friday from January 2025.

If you are 17+ then come down at see what we're all about.

At Ryhill & Havercroft Leisure Centre, WF4 2BB.

- Make friends for life.
- Improve your physical & mental health.
- Be a part of the community & the hammers family!
- Free to train!

If you are interested in joining our exciting & committed squad of rugby league players, or want to find out more add us on Facebook (Rycroft Hammers) or contact us:

Jamie - 07555096596

Dean - 07841374266

Deanwalker89@hotmail.co.uk

Chair Exercise takes place on a Monday afternoon at 2 pm at Havercroft and Ryhill Community Learning Project. Please call 01226 727824 for more information.



Sports

Hemsworth Dragons are an amateur Rugby Club that play and train on the rugby field at Gorton Street Kinsley. We have 4 junior teams that compete in the Yorkshire Junior League and an open age team that competes in the Yorkshire Men's League. The Junior teams are cubs, under 6s, under 10s and under 15s. Our aim was and remains to encourage kids, boys and girls from all backgrounds to come and enjoy playing rugby in a safe environment and to learn lessons for life such as teamwork, discipline, hardwork and communication which are all important life skills. We are a family friendly club and aim to emerse ourselves within the local community, so please come and give us a try, contact us at hemsworthrl@gmail.com for more information.



KEEP FIT
EVERY MONDAY
10:00AM-11:00AM

£5

RED ROOF CENTRE,
WAKEFIELD ROAD,
KINSLEY,
WF9 5BP
01977 610931

wakefieldcouncil working for you

Red Roof CENTRE

YOGA CLASSES

WITH LAURA

11.30-12.30
EVERY WEDNESDAY MORNING

EXPRESSION OF INTEREST FORM ON OUR WEBSITE AND LINKED ON OUR FACEBOOK PAGE
ALL ABILITIES WELCOME

£5 PER SESSION

RED ROOF CENTRE, WAKEFIELD ROAD, KINSLEY, WF9 5BP
01977 610931



Havercroft and Ryhill Sports and Youth centre offer a range of facilities to the local communities. These include birthday parties, meeting rooms, hall hire and 3G pitch. Catering is available on request.

Please call 01226 723659 for further details.



Friends of Fitzwilliam Station

Was formed in 2018 and is a volunteer run group, promoting the railway and working closely with local community groups and schools. We invite new local schools or groups to work alongside us in promoting their work in our poster cases.

We have recently worked with Edgelands Arts to update the bridge art which includes art work representing Sport, Leisure, Farming, Coal Mining, Railways and Social Life locally. Schools and community groups were also involved in this project.

Email us for more information - fitzwilliamstation@gmail.com
Morris Barrow – Chair



Friends for everyone was formed in December 2023 by a group of volunteers. The group is aimed at disabled adults with additional needs and their carers.

Monthly themed events to bring everyone together and provide experiences that some may never have experienced such as 'a day at the beach', 'a day at the carnival!'

With over 72 service users the group is growing fast!!

December marks their 1 year anniversary as a non-profit community group 2025 looks very exciting with lots of new ideas and experiences up their sleeve!

Contact Stacy on 07762784198
Email f.f.e2024@outlook.com



Friends of Vale Head Park

We are happy to be part of the Building Healthy and Sustainable Communities with Red Roof Centre and Havercroft and Ryhill Community Learning Project. We look forward to making close relationships from the project with other local groups.



Friends of Hemsworth Vale Head Park





Whether you're preparing for your baby, or already have your little one, our drop in sessions are here to support you!

Private, 1:1 space available to speak to one of our Trained Peer Supporters. No need to book, just turn up.

You'll find FAB at:

The Havercroft and Ryhill Centre
Mulberry Place, Ryhill WF4 2BD
on the 1st Friday of every month
9:00am - 11:00am (term time only)

7th Feb, 7th March



www.familiesandbabies.org.uk
 Helpline: 01924 851901
 24 hours a day, 7 days a week



Whether you're preparing for your baby, or already have your little one, our drop in sessions are here to support you!

Private, 1:1 space available to speak to one of our Trained Peer Supporters. No need to book, just turn up.

You'll find FAB at:

Red Roof Centre
Wakefield Road, Kinsley WF9 5BP
on the 3rd Tuesday of every month
9:30am - 11:00am

21st Jan, 18th Feb, 18th March



www.familiesandbabies.org.uk
 Helpline: 01924 851901
 24 hours a day, 7 days a week



Changing Lives visit Havercroft and Ryhill Community Learning Project every Thursday 9 am to 12 noon. They offer a range of health and well being support. **Call 01226 727824 for further details.**



Dogs Trust have attended Red Roof Centre for pop-up sessions to help with support and advice for your family dogs. The Community engagement officers are available within local hubs to reduce the number of dogs being rehomed, promote responsible ownership and improve behaviour.

We love to chat with owners about all things dog and signpost to our services.

Our resources include a free behaviours support helpline, training classes and a range of webinars and physical resources on all things behaviour

and training. We also offer seasonal advice such as help preparing for fireworks and hot weather.



Watch out for the Liver Buddies van coming back to Havercroft and Ryhill Community Learning Project and Red Roof Centre in 2025.



Neighbourhood Policing Team

Our Neighbourhood Policing Team for Havercroft and Ryhill will be holding the next PACT (Police and Communities Together) meeting in Havercroft and Ryhill Community Learning Centre on Tuesday 25th March 2025 at 7 pm. We also hold a 3 weekly drop in at the centre where you can come and speak to a member of the team. Please call the centre on 01226 727824 for more details.



PCSO 206 Liddle and PCSO 290 Sturgess are from the local neighbourhood policing team based at South Kirkby Police Station. They are both community support officers for the South-East Ward and cover Hemsworth, Kinsley, Fitzwilliam and South Hiendley. They currently hold a contact point at Red Roof Centre for anyone to drop by and raise any community issues they

have or if they need any crime prevention advice, or simply just a chat and a brew.

PCSO Liddle & PCSO Sturgess South East Ward



NEIGHBOURHOOD POLICING TEAMS npt

Havercroft & Ryhill Contact Point

Tuesday 7th January 2025, 09:30am – 10:30am @ Havercroft & Ryhill learning centre.
 Tuesday 28th January 2025, 09:30am – 10:30am @ Havercroft & Ryhill learning centre.
 Tuesday 18th February 2025, 09:30am – 10:30am @ Havercroft & Ryhill learning centre.

Team Email : wakefield.rural@westyorkshire.police.uk

www.westyorkshire.police.uk

NEIGHBOURHOOD POLICING TEAMS npt

WEST YORKSHIRE POLICE NPT CONTACT POINT

LOCATION:

DATE:

| | |
|------------------------------------|--------------------------------|
| THURSDAY 23 RD JANUARY | THURSDAY 8 TH MAY |
| THURSDAY 13 TH FEBRUARY | THURSDAY 29 TH MAY |
| THURSDAY 6 TH MARCH | THURSDAY 19 TH JUNE |
| THURSDAY 27 TH MARCH | THURSDAY 10 TH JULY |
| THURSDAY 17 TH APRIL | |

TIME:



Citizens Advice Bureau and Leeds Credit Union offer a drop in service on the following days and times at Red Roof Centre and Havercroft and Ryhill.

Red Roof Centre

Citizens Advice
Leeds Credit Union

Mondays 10-12noon
Mondays 9.30am-3pm

Havercroft and Ryhill Community Learning Centre

Citizens Advice
Leeds Credit Union

Thursdays 10-12noon
Thursdays 10-2pm

Affordable. Flexible. Fair.



Handy Family Loan

For just **£12 a week** you could borrow **£500!**

If it's your first loan with us, or you only get Child Benefit for one child, you could borrow up to **£850**.

If you're an existing borrower with us and get Child Benefit for two or more children, you could borrow up to **£1,250**.

See Tracy @

Red Roof Centre, every **Monday 9.30am - 3pm**

Havercroft and Ryhill Community Learning Centre, every **Thursday 10.00am - 2pm**

leedscreditunion.co.uk

| Amount of Loan | For just... | Term | Number of repayments | Total repayment | APR |
|----------------|---------------|-----------|----------------------|-----------------|-------|
| £250 | £6.00/week | 50 weeks | 50 | £296.20 | 42.6% |
| | £26.00/month | 12 months | 12 | £299.70 | 42.6% |
| £500 | £12.00/week | 50 weeks | 50 | £591.61 | 42.6% |
| | £51.00/month | 12 months | 12 | £601.62 | 42.6% |
| £750 | £18.00/week | 50 weeks | 50 | £887.46 | 42.6% |
| | £76.00/month | 12 months | 12 | £903.48 | 42.6% |
| £850 | £20.00/week | 50 weeks | 50 | £1009.61 | 42.6% |
| | £86.00/month | 12 months | 12 | £1024.23 | 42.6% |
| £1,000 | £23.00/week | 50 weeks | 50 | £1193.13 | 42.6% |
| | £101.00/month | 12 months | 12 | £1205.39 | 42.6% |
| £1,250 | £29.00/week | 50 weeks | 50 | £1488.90 | 42.6% |
| | £126.00/month | 12 months | 12 | £1507.28 | 42.6% |

Come and see Tracy at **Red Roof Centre** every **Monday 10am - 3pm** to find out more.

Or apply online (using the handy QR code) or via our mobile app.



Representative APR of **42.6%**

We offer rates from 6.6% APR to 42.6% APR dependent on circumstances, loan amounts and our lending policy. It's easy to apply and we aim to provide a quick, fair, affordable decision. Loans are available to UK residents and over 18s only.

Leeds City Credit Union Ltd is authorised by the Prudential Regulation Authority and regulated by the Financial Conduct Authority and the Prudential Regulation Authority – firm reference number 213369. This information may be checked by visiting www.fca.org.uk or www.bankofengland.co.uk/pru. Leeds Credit Union is a trading name of Leeds City Credit Union Ltd.

Leeds Credit Union
Carlton Tower, 34 St Paul's Street, Leeds, LS1 2QB
Tel: 0113 242 3343
services@leedscreditunion.co.uk
www.leedscreditunion.co.uk

LCU Oct 2024

Need to Talk About Your Mental Health?
Access support, get advice, meet new people

Group Support Session
Starts Wednesday the 8th of January 2025

WED The Fitzwilliam Centre
3pm - 5pm

Friendly and informal, arrive or leave at any time
Staff are on hand to provide support and advice
...or just to listen

Want to know more?
Call Martin on 01540126942
or email martin.bazzant@spectrum-cic.nhs.uk

Spectrum People

The lunch club at Havercroft and Ryhill Community Learning Centre takes place every Monday from 12.15 excluding bank holidays.

Please contact the centre for more information or to book a place on **01226 727824**.

AND

For further details of the **Food Pantry** and **Emergency Food provision** please call **01226 727824**

Red Roof CENTRE

QUICK & EASY PRINTING & COPYING

RED ROOF CENTRE

OPENING TIMES
MONDAY-FRIDAY 9-3PM
TUESDAY-WEDNESDAY EVENINGS
OPENING HOURS DO VARY DEPENDING ON BOOKINGS.

OFFICIAL DOCUMENTS PHOTOCOPYING

EMAIL US RETURN LABELS FOR PRINTING

EMAIL US TRAVEL DOCUMENTS FOR PRINTING

WAKEFIELD COUNCILS FOOD VOUCHERS

DOUBLE SIDED = DOUBLE THE PRICE

A4 BLACK 10P
A4 COLOUR 25P
A3 BLACK 20P
A3 COLOUR 35P

HELP HUB The New Service in your area to help you!

01977 610931 EXT1



Rycroft Youth Club

Offers the following sessions for young people

Monday:

4-6pm Youth Club age 8-12 years

6-8pm Youth Club age 13-19 years

Tuesday:

4.30-6pm Future Selph Social Group

Wednesday:

4-6pm Youth Club age 8-12 years

6-8pm Youth Club age 13-19 years

Future Selph is for young people aged 16-25 years of age who have who want support around low level mental health, support in finding work or volunteering, housing issues or any other issue facing young people.

Home Time is for anyone who has recently been discharged from hospital and needing support reengaging back into the community.

Young at Heart Community Group is on a

Monday 1 - 3 pm.

St James Church

Ryhill is very happy to be part of the Building Healthy and Sustainable Communities Project. We deliver a range of support to our local communities including a place of welcome on a Monday lunchtime where people can come together in the warmth and have a meal, hot drink, and a catch up, as well as a community Coffee morning on a Friday morning where people are welcome to come and spend time with one another.

St James also supports our local food pantry and is available as a Collection Centre for anyone who lives in the locality to drop food off so it can be taken and deposited at the Pantry.

All of these opportunities to come together are available to all people regardless of Faith, and of course we offer the usual church services as you would expect.

You can contact the Church which is now part of a group of churches called the Priory Benefice on **01226 107705** or **01977 805705**.



OUR CAFE IS OPEN!

FOOD, HOT/COLD DRINKS & HOMEMADE CAKES/BAKES AVAILABLE

MONDAY - FRIDAY

Open 10am-2pm

TERM TIME ONLY

☎ 01977 610931 EXT 3

Wakefield Road,
Kinsley WF9 5BP

Call in to see an advisor at Red Roof Centre 2nd Monday of the month 9-4pm

STEP-UP

FREE one-to-one support to help you:

Find work

Build your career

Learn new skills



STEP-UP is a **FREE** service available in your area **NOW**

Whether you're employed, unemployed or facing redundancy we can help you with:

- Changing career
- Learning new skills
- Finding work
- Building confidence
- Finding courses to match your interests and hobbies
- Connecting with local groups and events
- Claiming benefits
- Volunteering
- Wellbeing
- Mental health and disabilities
- Money and debt
- Substance misuse
- and much more!

Get in touch today to speak with one of our friendly advisors.

01924 303334

stepup@wakefield.gov.uk

www.wakefield.gov.uk/stepup

wakefieldcouncil

West
Yorkshire
Combined
Authority

Tracy Brabin
Mayor
of West Yorkshire

Frickley Athletic Community Foundation are pleased to work in partnership with Red Roof Centre for the 2024 & returning in 2025 Buggy Walk along with Stay, Play & Weigh every Tuesday morning at Red Roof Centre

Working in partnership Red Roof Centre CIC & Frickley Athletic Community Foundation

KINSLEY & FITZWILLIAMS' BUGGY WALK

Everyone Welcome

RETURNING MAY 2025

- EVERY Friday
- 10am-11am
- May-September

Meeting point Red Roof Centre reception area
Pushchairs available to hire on request

Please express an interest by email to Rachael at rucas@kinsley-fitzwilliam.org.uk

01977 610931

Red Roof Centre CIC, Wakefield Road, Kinsley, WF9 5BP

STAY, PLAY & WEIGH

Our weekly playgroup for ages 0-3 (baby to toddlers)

Come weigh and measure your baby in a private room.

EVERY TUESDAY
9:30am - 11:15am

Red Roof Centre Kinsley, WF9 5BP
Contact: BIANCA - 07476204901 or greg@frickleyathletic.co.uk

NO NEED TO BOOK
STAFF ARE DBS CHECKED

ACTIVITIES -

- Toys & Games
- Messy Play
- Parachute Games
- Arts
- Seasonal Crafts

£1 PER FAMILY

Officers from the Neighbourhood Police Teams are working alongside WMDC to launch the Safe Zone scheme across the Wakefield district.

A Safe Zone is a place where a person can go if they feel threatened, unsafe, scared or need help in contacting someone. The current Safe Place scheme (a place where someone with learning difficulties/autism etc can access) will be replaced with Safe Zones.

Both Red Roof Centre and Havercroft & Ryhill Community Learning Project are part of the scheme.



Red Roof and Havercroft and Ryhill Community Learning Project

Our fully trained staff and volunteers are out and about across our communities providing free blood pressure checks and Swap2Stop vape kits.

Please contact Katherine at Havercroft & Ryhill Community Learning Project or Rachael at Red Roof Centre for more information.



Library and IT facilities at Havercroft and Ryhill Community Learning Project and Red Roof Centre, both centres open Monday-Friday.

Havercroft and Ryhill Community Learning Project offer a range of craft activities including flower arranging, crocheting and card making.

There are lots of lovely playgroups happening across our local communities including at Havercroft and Ryhill Community Learning Centre, Red Roof Centre, Solid Rock and the Early Help Hub Havercroft and Hemsworth.

Call 01226 727824 or 01977 610931 for more information.



SWAP to STOP 

Get your **FREE** vape starter kit and quit the cigarettes for good.

Swap to Stop is a new scheme open to all Wakefield smokers over 18 years of age who are wanting to quit. The scheme provides smokers with a FREE vape starter kit and a choice of flavoured oils to help them swap to a less harmful alternative to cigarettes.

If you are interested in getting a free vape starter kit, ask a member of staff!

FREE BLOOD PRESSURE CHECKS

CALL IN FOR YOURS DOING TODAY!!

Our Blood Pressure Champions are doing free blood checks, ask one of us about having yours done today!!

A simple check could save your life!!



HELP AT THE HUB

Do you need advice or help with housing, bills, benefits, jobs and skills?

We have advisors ready to support you at our Help at the Hub venues. They can look at your situation and work with you to find solutions, and support you in taking steps to improve things.

Our friendly advisers will:

- Always be happy to talk to you, however big or small your problem might be.
- Never judge you or make you feel bad about your situation.

SCAN ME



Find your local hub

Each Help at the Hub will have a Citizens Advice Bureau weekly drop in session with the times listed below.



- Queens Mill, Castleford, WF10 1DL**
01977 556 741
Wed 10am-12pm
- St Mary's, Pontefract WF8 2AY**
01977 705 341
Fri 10am-12pm
- Havercroft & Ryhill Community Learning Centre, WF4 2BD**
01226 727 824
Thu 10am-12pm
- Kellingley Social Club, WF11 8ER**
01977 673 115
1st & 3rd Mon each month 10am-12pm
Kellingley Community Shop, WF11 8EE
2nd & 4th Mon each month 10am-12pm
- St George's, Lupset**
Broadway, Lupset, Wakefield WF2 8AA
01924 369 631
Tue 10am-12pm
- Red Roof Centre CIC, Kinsley, WF9 5BP**
01977 610 931
Mon 10am-12pm
- Eastmoor Community Project**
St Swithun's Community Centre, WF1 4RR
01924 361 212
Tue 10am-12pm
- Lightwaves Leisure and Community Centre**
Lower York St, Wakefield, WF1 3LD
01924 360 158
Wed 10am-12pm
- Westfield Centre**
26 Westfield Ln, South Elmsall WF9 2PU
01977 642 335
Tue 10am-12pm

Citizens Advice is a local charity that provides free and confidential advice to residents. You can visit their drop-in session at a hub without an appointment or access their advice online, over the phone, or in person.

For more information and extra drop-in centres, please visit their website wakefielddistrictcab.co.uk. The AdviceLine telephone service is open 9am to 5pm weekdays and is free to call on 0800 144 8848.

citizens advice Wakefield District

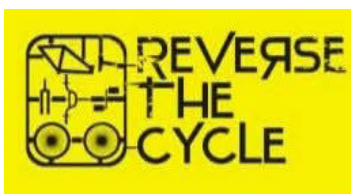


The Solid Rock Church Havercroft

Our coffee shop is open Monday to Thursday 9 to 12 noon alongside our playgroup and charity shop.

We also have a lunch club on the first Friday of the month except January and August.

Contact us on **07776 064318** for details of our Foodbank Fridays.



'Reverse The Cycle' is a Not for profit organisation, targeting families and young people using bicycle related programmes.

We also provide bicycle servicing, repairs and used bike sales to the community.

We predominantly work with schools to deliver accredited bicycle mechanics programmes to young people not engaging in education.

We donate used bikes to community organisations to support local people.

You can contact us through Facebook search for "Reverse The Cycle" and it will give you information regarding opening times and means of contact.

Lee Farmer

Founder of Reverse the Cycle



Fitzwilliam Post Office in partnership with LA Toys & Gifts.

James, Lynnette and Shona would like to welcome you to Fitzwilliam Post Office and LA Toys and Gifts located on Wakefield road WF95AJ just near the bridge.

Here you will find an array of toys, gifts and games for all the family at affordable prices with new stock arriving regularly in store and online at <https://www.polatoysandgifts.com/> which can be ordered online to be collected in store.

We have a wide range of cards, stationary, gift cards and gift bags for all occasions.

Withdraw cash, Pay your bills, top up your gas and electric and get all your travel essentials including foreign currency, travel money cards and travel insurance in store instantly, Post, collect and return your mail in one place including Amazon, Littlewoods, Vinted, Shein and many more.

Why not pop in and say hello!

Any questions? - Feel free to ask.

James, Lynnette and Shona – Post Office Cashiers



Horncastle farm is a 5th generation farm located in Havercroft. We are gearing up for an exciting spring where we will once again be opening our animal feeding experiences enabling you to get up close and personal with new arrivals here at the farm, especially our super-cute bottle fed lambs.

Schools are invited to organise fully funded visits, providing students with a hands-on learning opportunity to understand farm life and agriculture. For those who enjoy a good old cuppa, the coffee bar offers a cosy spot to relax and enjoy locally brewed drinks and fresh bakes.

We hope our upcoming events offer something for everyone.

Tickets can be booked via our website

www.horncastlefarm.com

Chad & Lucy Stevens – Farm Owners



The warmest welcome from MHA Communities Wakefield and District.

We offer you the chance to join us at any of our activities for the warmest of welcome, a brew, a chat and lots of fun. So come along and join us at new and old venues with new and old friends to celebrate seasonal activities throughout the year.

Our Tea Cosy group has undergone a little bit of a change, we have FREE craft workshops available, these will run for 6 weeks at a time. These sessions are held on a Tuesday from 10am - 12.30pm each week.

We also have other activities such as games and quizzes number to join in. A 2 course lunch is on offer for a small charge of £6.00.

Located in the Fitzwilliam Centre, Wakefield Road, WF9 5AF.

Visit our website at www.mha.org.uk for more information.

The local fire service drops in so that safety checks can be arranged in your home. These can be arranged independently if you contact the service station to arrange a visit.

Jeanette Mullaney – Scheme Manager

Family Hubs – South East

Families can find information about all the Family & Youth Hubs activities through the webpage www.wakefieldfamilies-together.co.uk. In this area we have Havercroft Family Hub on Cow Lane, Cedars Family Hub at Barnsley Road, Hemsworth and the Youth Hub at Platform 1, Hemsworth.

We have a wide range of free groups and activities for families with children 0 – 19 years (25 years for those with SEND) which can be found by downloading our what's on guides, or also through online learning activities for supporting your child, positive parenting, relationship support and much more. We link with lots of community organisations and partners who also use our venues to deliver their services.

Cheryl Ainley Dawson
Family Hub Co-Ordinator



Brownies

At Brownies, we welcome all girls aged 7-10 years old who would benefit from joining our group.

The Brownie programme is aimed at confidence building, skills acquisition, team building etc through games, activities, and badges.

We address issues on healthy lifestyles, appropriate behaviour, self-esteem etc through our fun games and activities.

We meet Mondays 6:00pm-7:30pm at the Church of Resurrection, Fitzwilliam, WF9 5BP.

Wendy Freer – Girl Guide Leader

Brownies

Girls have nonstop fun, learning and adventure for ages 7 to 10

At Brownies, we welcome all girls to explore their creative side, get out into the great outdoors and start to learn to look after themselves, others and the world we live in.

Join a local Brownies group girlguiding.org.uk/joinus

Join your local Family Hub!

Scan the QR Code:

Wakefield's Start for Life Offer

Find out more about the support for new and expectant parents by scanning the QR code:

Wakefield SEND Local Offer

Find out more about the support on offer across the district in relation to SEND. Scan the QR code:

50 things to do before you're five

For more information, scan the QR code:

FREE ONLINE programmes for parents!

Scan the QR code to find out more:

UNDERSTANDING YOUR CHILD
SOLIHULL APPROACH

'Team Around' approach

A Team of professionals that offer early help. Scan the QR code to find out more:

Happy Healthy Holidays will return this winter!

Find and book FREE activities by scanning the QR Code:

Funded by Department for Education

NHS Growing Healthy Wakefield 0-19 App

Download the NEW Growing Healthy Wakefield 0-19 App

Download on the App Store | GET IT ON Google Play

Wakefield Stroke Recovery Service

If you've had a stroke, we're here to help. One of our Stroke Association Support Coordinators will work with you to identify your priorities and what's important to you so that we can best support you to rebuild your life after stroke.



We offer:

- A personalised review of what's important to you.
- Someone to talk to who understands.
- Tips to support your recovery.
- Information about stroke and access to other local services.
- Information on how to reduce your risk of stroke.
- The chance to share experiences with others in a similar situation.

Contact us:

Phone: 01924 372525
Email: wakefield.team@stroke.org.uk
Kayleigh Ratcliffe – Support Co-Ordinator

Hemsworth Food Pantry - Food Bank

Fellowship House, Southmoor Road, Hemsworth WF9 4LX. Providing emergency food parcels to the communities of Hemsworth, South Hiendley, Fitzwilliam, and Kinsley.
Email: hemsworthfoodbank@yahoo.com
Text: 07907 104687

Helen Richardson
Food Bank Managerial Volunteer

Providing Emergency Food Support for people living in Hemsworth, South Hiendley, Fitzwilliam & Kinsley

Donations welcome
Please contact the food bank

07907 104687
hemsworthfoodbank@yahoo.com
hemsworthfoodpantry.org.uk
[hemsworthfoodbank](https://www.facebook.com/hemsworthfoodbank)
[hemsworthfoodbank](https://www.instagram.com/hemsworthfoodbank)

Hemsworth Food Pantry
Community Food Bank

POST OFFICE **Your local post office is in**

St Paul's Methodist Church, Chapel Street, Ryhill

Every Monday 9.15 - 12.15.

Join us for our coffee morning every Saturday 8.30 - 11.30

Normington & Sons
— FUNERAL HOME —

We are a local family run business. We are open throughout the year and have a 24 hour helpline

01226 700760



Rycroft Primary Care Centre

is accredited with Leeds University and Kings College London as a GP Training Practice, hosting trainee GPs and medical students and with Huddersfield University for student nurses.

We also have a branch surgery, **South Hiendley Surgery**, which dispenses medicines to patients living in the South Hiendley and Brierley area.

Both sites are currently registering new patients from the surrounding areas.

We have four Partners, two salaried GPs and a nursing team who are all supported by our Practice Manager Brogan Smith and her admin team, to provide a high-quality service to our approximately 8,600 patients. We also host Clinical Pharmacists, a Mental Health Practitioner and a First Contact Physio, as well as having a Mid Yorks Podiatrist working within the Practice. On Mondays and Fridays, McCormacks Opticians offer a service to patients at the surgery.

We have recently undertaken the Modern General Practice Improvement Plan, which aims to improve the quality and accessibility of the service we offer to patients. One outcome of this was **'patients want a more accessible service'**, our response was **'did you know that you can download the Airmid or NHS App so that you are able to access appointments, blood and test results and your medical records'**.

We now invite our patients for their Long Term Condition review in their birth month, this is to help us provide an holistic approach for patients who have more than one condition, reviewing their medication at the same time.

We are currently offering the 'Healthy io.' initiative to our patients, that is to monitor their urine for indications of Chronic Kidney Disease, which is recommended to be undertaken annually for patients living with diabetes. The programme enables patients to test their own kidney function in the comfort of their own home, with the results being returned to the GP at the surgery.

We offer inhouse clinics inline with the National Vaccination programmes, including flu, covid, shingles, RSV and childhood immunisations, to name a few.

Rycroft and South Hiendley are Veteran Accredited, giving priority access to military veterans and their families and are also part of the Safe Surgeries scheme, which tackles barriers to anyone accessing health care.

We have a Patient Participation Group which meets regularly and would like to hear from anyone who would like to join our group going forward, everyone is welcome.

If you are interested please contact Brogan, Practice Manager, at brogan.smith3@nhs.net.

The Grange Medical Centre is a large three-site practice with a clinic list of just under 14,600 patients; we were rated as 'Good' overall during our most recent CQC inspection.

The practice has been in existence for over 100 years and was carried out from three surgeries in Hemsworth. The practice buildings were wooden huts until 1967 when a purpose-built surgery was built in Highfield Road, Hemsworth. We soon outgrew this building and moved to our current site in 1979. The surgery was extended in 1993 to provide additional patient care facilities, a larger waiting room and increased office space.

In March 1996, our therapy unit was opened; a new two-storey building which provides additional office space as well as facilities for staff training and seminars. The therapy unit also houses a fully functioning level 3 theatre facility. Further building work was completed to our purpose built, JAG accredited endoscopy unit, which stands to the rear of the main building, in the summer of 2012.

In May 2001, a new purpose-built surgery was completed at Kinsley, providing much needed extra space and state-of-the-art facilities. On 1st August 2003, the Grange Medical Centre and Highfield Road Surgery merged as one practice and on 1st July 2006 The Grange Medical Centre merged with Greenview Medical Centre in Upton.

The practice is currently accepting registrations from new patients. To register as a new patient with the practice, patients can either go online: <https://gp-registration.nhs.uk/B87026/gpreistration/landing> or contact our reception team and request a new patient registration pack. Once completed, registration forms should be returned to reception with the relevant identification. All new patients will be invited to attend a new patient health check.

Medical treatment is available from the date of registration.

Whilst we are one practice, providing a range of services across three sites (Hemsworth, Kinsley and Upton), all patients registered with the practice can access services from any of the three sites, and see a healthcare professional of their choice, regardless of where they live.

The practice accepts new patients from Hemsworth, Kinsley, Fitzwilliam, South Kirkby, South Hiendley, Upton and South Elmsall, and patients may it helpful to use the 'postcode checker' on our website – <https://www.grangemedicalcentre.co.uk/pages/New-Patients> - which will indicate whether we accepting patients from your area.

We have three Partners, four salaried GPs, three Advanced Nurse Practitioners and a nursing team (Minor Illness Nurse, Practice Nurses, Treatment Room Nurses and Healthcare Support Workers) who are all supported by our Practice Manager, Line Managers and Administration Team.

As part of our involvement with our local PCN (Primary Care Network) we also provide the following services for our patients: Clinical Pharmacist, Mental Health Practitioner, Health and Wellbeing Coach, MSK (Musculoskeletal) Practitioner and an Occupational Therapist.

We also have visiting practitioners from Novus Healthcare (Audiology and Physiotherapy), Mid-Yorkshire NHS Hospital Trust (Ultrasound) and DMC (Dermatology). As a practice we also carry out minor surgery procedures.

We offer in-house clinics in line with the National Vaccination programmes, including Influenza, Covid, Shingles, RSV and childhood immunisations.

We are a member of the Safe Surgeries scheme which means we are committed to taking steps to tackle the barriers faced by many migrants in accessing healthcare.

As a surgery we are proud to have been designated a 'Safer Place' location. The Safer Places Scheme is a voluntary scheme which assists vulnerable people with learning disabilities, autism and dementia to feel safer when travelling independently. The confidence to travel independently assists vulnerable people in maintaining their independent living skills and also helps with their overall well-being.

We have a dedicated Secondary Care Team who run our JAG accredited Endoscopy Unit. The JAG accreditation is a formal recognition that our endoscopy unit has demonstrated it has met the competences to deliver against a defined criteria.

We have a small, but friendly and involved, Patient Reference Group which meets regularly. We would welcome anyone who would like to join our group to discuss the services we offer and how improvements can be made for the benefit of both patients and the practice.

Patients are welcome to visit our website: <https://www.grangemedicalcentre.co.uk/> and also our Facebook Page – just search 'Grange Greenview and Kinsley Medical Centres.'

The practice can also be contacted on **01977 610009** or via **email: wycib-wak.grangemedicalcentre@nhs.net**



Your local MP & Councillors

JON TRICKETT

'I am proud to support the efforts of the Red Roof Centre and the Havercroft and Ryhill Community Learning Centre, and their community initiative 'Building Healthy and Sustainable Communities'.

The Normanton and Hemsworth constituency office handles a large volume of casework and I employ a great team of staff to help constituents with any problems they have.

This office operates an open-door policy, where any constituent can come in and talk to a member of staff. Please call ahead of your visit to book an appointment so that we can be ready to help.

Our public office opening hours are from 9:30 am- 4:00pm, Monday – Friday (excluding Bank Holidays)

If you have a case in which you need advice or assistance, then please contact us:

Telephone: 01977 655695

Email: jtrickett@jontrickett.org.uk

Address: Room G12, Moorthorpe Railway Station, Barnsley Road, South Kirkby, WF9 3AT'



Ryhill Parish Council

serves the community of Ryhill. Please contact the Clerk to the Parish Council at ryhill.clerk@gmail.com or **01484 882331** for meeting dates or further information.

You can also visit our website www.ryhillcouncil.co.uk



Havercroft with Cold Hiendley Parish Council

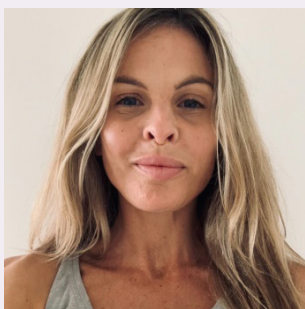
serve the communities of Havercroft and Cold Hiendley.

As a Parish Council we meet on a monthly basis except during August. This is usually the second Wednesday of every month at 7pm in Havercroft and Ryhill Community Learning Centre.

We are very happy to be supporting the Healthy and Sustainable Communities Project and look forward to working with the different partners across our communities.

You can contact us via email at havercroftcoldhiendley@gmail.com

or visit our web site for more information www.havercroftwithcoldhiendleyparish.co.uk



Cllr Laura Jones
lajones@wakefield.gov.uk
07887787278

You're District Councillors for Ward 7

Covering:
Kinsley, Fitzwilliam, Hemsworth, South Hiendley and Felkirk.

We also run regular local councillor's surgeries near you.



Cllr Melanie Jones
cllrmjones@wakefield.gov.uk
07385467244



Cllr Jakob Williamson
jakobwilliamson@wakefield.gov.uk
07787892464

You're District Councillors for Ward 5

Covering:
Crofton, Ryhill, Havercroft & Walton.

We deliver a range of councillor surgeries within Havercroft and Ryhill and arrange home visits where needed.



Cllr Maureen Cummings
mccummings@wakefield.gov.uk
07834 997767



Cllr Usman Ali
uali@wakefield.gov.uk
07385 467306



Cllr Faith Heptinstall
faithheptinstall@wakefield.gov.uk
07887 790546

USEFUL NUMBERS/WEBSITES


| | |
|--|--|
| 999 | Police, Fire, Ambulance Emergency |
| 101 | Police Non-Emergency |
| 111 | NHS Non-Emergency |
| 0345 8 506506 | Wakefield Council Switchboard |
| 0345 8 503503 | Social Care Direct |
| 0345 8 507507 | Wakefield District Housing One Call |
| 0800 6781602 | AGE UK |
| 0300 123 3393 to call, or text 86463 | MIND (Mental Health Support 9-6pm Monday-Friday) |
| 116 123 | Samaritans (24hr a day) |
| 0300 304 7000 | SANeline (4:30pm-10pm every day) |
| 0800 689 5652 | National Suicide Prevention Helpline (6pm-Midnight everyday) |
| 0800 58 58 58 | CALM (Campaign Against Living Miserably) 5pm-Midnight everyday) |
| Text 85258 | Shout (Prefer not to talk? 24/7 text service providing support in a crisis) |
| 0800 0684141 | Papyrus (under 35 suicidal feelings, 24/7) |
| 0800 144 8848 | Citizens Advice Bureau |
| 0300 123 1912 | Turning Point (Drugs, Alcohol, Mental and Sexual Health and Learning Disabilities) |
| 0800 1381625 | Stop Hate UK |
| 01977 735865 | CAMHS (Child & Adolescent Mental Health Support) |
| 0800 1111 | NSPCC (Under 18's) |
| www.alzheimers.org.uk | Alzheimer's Society |
| www.themix.org.uk | The Mix (Sunday-Thursday 8-9.30pm, a safe space to get support) |
| www.andysmanclub.co.uk | Andy's Man Club |
| www.nightline.ac.uk/listening-services | Nightline Association |
| | (If you're a student, you can look on the Nightline website to see if your university or college offers a night-time listening service. Nightline phone operators are all students too.) |
| www.thestreetlink.org.uk | Report rough sleepers |

Taking Over a Vulnerable Person's Home

Do you have a vulnerable neighbour? Is there someone who appears to be taking over their home and pushing them out?

Criminals can use a vulnerable person's home to store drugs, guns and other weapons. They also hide child victims of exploitation.

Tell the Police if you think your neighbour is being victimised in this way as a serious crime could be taking place.



WORRIED YOU'VE BEEN SPIKED?

There are different types of spiking, such as drink spiking or by injection.

Here are some of the signs that you could have been spiked:

- confusion
- nausea or vomiting
- hallucinations and paranoia
- disorientation or poor co-ordination
- loss of ability to communicate properly
- unconsciousness

If you are worried, alert a member of bar or security staff.
Call 101 to report to the police or 111 for the NHS non-emergency helpline.
If it's an emergency or you need an ambulance, call 999.




SCAN ME Scan the QR Code or visit: www.westyorkshire.police.uk/Spiking

West Yorkshire Police

Artwork created by Devon & Cornwall Police

Hughes is the local Community Chemist for Havercroft and Ryhill.

We offer many services including Blood Pressure checks and have recently worked in partnership with Havercroft and Ryhill Community Learning Project following their Blood Pressure Champion training.

Opening Hours:

| | | | |
|------------------|-------------|---|-------------|
| Monday | 09:00-13:00 | & | 14:00-18:00 |
| Tuesday | 09:00-13:00 | & | 14:00-18:00 |
| Wednesday | 09:00-13:00 | & | 14:00-18:00 |
| Thursday | 09:00-13:00 | & | 14:00-18:00 |
| Friday | 09:00-13:00 | & | 14:00-18:00 |
| Saturday | 09:00-12:00 | | |
| Sunday | Closed | | |

Scouts

48th Wakefield (Ryhill & Havercroft)

Our group meets at the Solid Rock Church on Cow Lane on Wednesdays;

Beavers 5.45pm until 6.45pm

Cubs 7pm until 8pm

Scouts 8pm until 9pm

Our values are Integrity, Respect, Care, Belief and Co-operation. We exist to actively engage and support young people in their personal development, empowering them to make positive contributions to society.

We are always keen to meet new volunteers and discuss what they can offer by way of time, skills or opportunities whether this be adhoc or on a regular basis.



“ A warm welcome awaits you at our family run garden centre situated approximately half a mile from Nostell Priory on the B6428 between Fitzwilliam and Havercroft.

Since we took over in February 2012 the site has been completely refurbished and restocked to provide everything for your gardening needs. The majority of the site is flat and wheelchair friendly.

Located on Newstead Lane, Havercroft. Follow us on Facebook at Newstead Nurseries to check out our latest offers.

Garden Centre Owner- Danny



(Call us on 0800 5874536 and book in for your free Safe & Well visits by your local Fire Department www.westyorkshirefire.gov.uk/safe-and-well-visits)



West Yorkshire Fire & Rescue Service



If you are a local community group or organisation and want to be part of the Building Healthy and Sustainable Communities Project and our next edition of the newsletter, please contact Rachael at **Red Roof Centre** if you are based in Kinsley or Fitzwilliam or Katherine at **Havercroft & Ryhill Community Learning Centre** if you are based in Havercroft or Ryhill.

Thank you



Red Roof Centre
01977 610931

Website: www.redroofcentre.com
Facebook: Red Roof Kinsley



Havercroft and Ryhill Community Learning Project
01226 727824

Facebook: Havercroft and Ryhill Community Learning Centre